

SPC800/1600

Secure Power Management Over IP

FEATURES AND BENEFITS

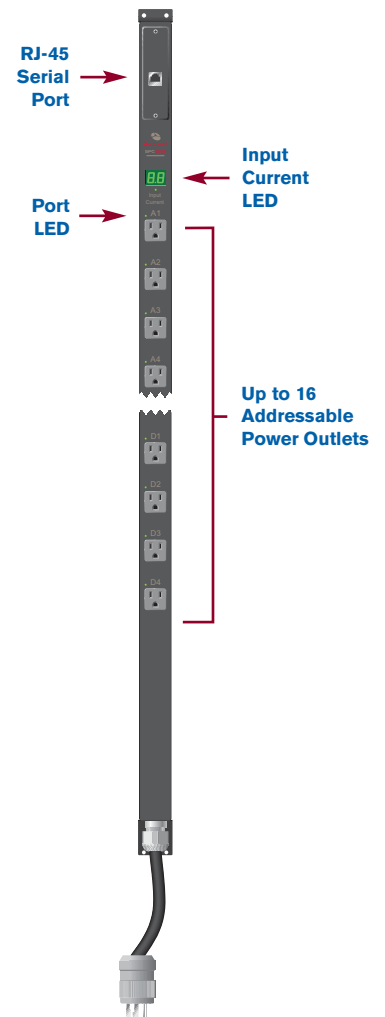
- **Intelligent Power Management.** Individual, addressable power outlets let you remotely reboot devices from any location in the data center or across the globe.
- **Security.** In addition to port specific and command specific access control, the SPC solution provides advanced user authentication and data encryption when combined with Avocent's CPS.
- **Power Monitoring.** Dynamically measures and reports total input current load and indicates on/off status for every port.
- **Power Control.** Features command-line local and remote power on/off cycling.
- **Energy Efficient.** Power-on sequencing eliminates in-rush current overload, which lets you maximize the number of devices on a single circuit.
- **Click and Connect Access.** When used with Avocent's DSView Windows application, the SPC lets you access power to virtually any connected data center device.
- **Space Saving.** Mounts vertically and conserves critical rack space with zero U form.
- **Ease of Use.** Available in 8 and 16 outlet models, with configurable port grouping and naming, multi-port commands and enhanced administration.

Reboot or power cycle data center devices with Avocent's secure power management over IP solution.

Avocent's SPC power management over IP solution sets new standards in the way you securely monitor and manage power to your business-critical servers and other data center network devices. Using Avocent's DSView Windows® application, you can remotely reboot or power cycle servers and network devices from any location using TCP/IP connectivity.

Combined with Avocent's CPS serial-based network appliance, the SPC power distribution unit delivers advanced power management and security. The SPC provides enhanced security options, including password protection, port-specific access rights and port groupings. The CPS adds authentication and multiple levels of data encryption for advanced user security.

SPC power management devices extend Avocent's DS Series by adding the ability to control power to data center devices over TCP/IP connections.



MECHANICAL

- **Height** 1.75" (4.45 cm)
- **Length** 62" (157.66 cm)
- **Width** 2" (5.09 cm)

POWER OUTPUT

- **Receptacles** 120 VAC NEMA 5-15R
- **Rating** 10A (per outlet)
- **RJ-45 Console Port** EIA-232
- **Overload Protection** In-rush prevented by power-on sequencing

POWER INPUT

- **Nominal Input Voltage** 120 VAC
- **Input Frequency** 60Hz
- **Current Rating** SPC800-AM, SPC1600-AM, SPC1600-AMS: 20A
SPC1600-AM1: 30A
- **Input Connector Plug(s)** SPC800-AM and SPC1600-AM: NEMA L5-20P locking SPC1600-AM1: EMA L5-30P locking, SPC1600-AMS: NEMA 5-20P straight blade non-locking

CONFORMANCE

- **Approvals** US & Canada (cTUVus mark) to UL 60950 3rd Ed. and CAN/CSA 22.2 No.60950-00, European Union (TUVGS mark) to 60950

LED INDICATORS

- **On Sense (Green)** Indicates power status
- **Load Sense** Dynamically displays cumulative current load

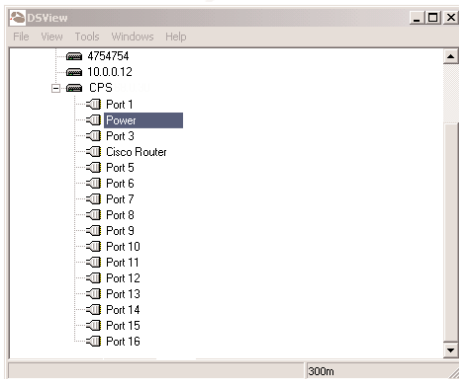
ORDERING DETAILS

- **Power Devices** SPC800-AM 8-port, 115 VAC 20A twist lock
SPC1600-AM 16-port, 115 VAC 20A twist lock
SPC1600-AM1 16-port, 115 VAC 30A twist lock
SPC1600-AMS 16-port, 115 VAC 20A straight blade non-locking
- **Accessories (included)** RJ-45 reversing cable
RJ-45 to DB9F-DCE serial port adapter
Rack mount kits

WARRANTY

- **Two Year**

When combined, the DS Series CPS network appliance and the SPC power management distribution device provide secure access and power monitoring using standard TCP/IP connectivity. The DS Series platform provides reliable access and control of servers, routers, firewalls and SPC power devices – all from Avocent's DSView Windows application.



DSView

